

Media Operating Software (MOS)



Seamlessly
Integrates with
Existing Software

Simplifies Video
Integration

Supports
Bay Networks
Multimedia
Workgroup Solution

The Media Operating Software (MOS), the heart of the Bay Networks multimedia workgroup solution, provides the seamless integration of Asynchronous Transfer Mode (ATM) multimedia traffic with off-the-shelf Windows applications.

The MOS provides guaranteed quality of service (QoS) for delivering sharp, crisp, real-time video images directly to desktop PCs. Installed on any ATM-attached PC, the software enables applications such as Microsoft Mail, Lotus Notes and Netscape Navigator to support both multimedia and data over a single wire without changing the network infrastructure.

The MOS is one component of a larger Bay Networks multimedia workgroup solution, which includes the Multimedia Switch and ATM multimedia adapter cards. The MOS, which runs on the

adapter's on-board RISC processor to offload the PC's main CPU, contributes the intelligence required to make desktop multimedia a viable option for business organizations today.

The Bay Networks multimedia workgroup solution can be seamlessly integrated with any existing enterprise, offering a simple, cost-effective method for introducing multimedia capabilities to the larger system. Fully compatible with the entire Bay Networks product family and supported by the Optimity® network management system, the multimedia workgroup solution adds a key feature to the industry's most complete set of switched internetworking products.

Benefits

Seamlessly Integrates with Existing Software

The MOS is transparent to standard Windows-based desktop applications such as MS Mail, MS Office and NetWare, protecting investments in existing software and training. Off-the-shelf applications can use multimedia without programming. Integration is completely transparent to the user, reducing support and training costs while allowing faster, trouble-free installation.

Simplifies Video Integration

The MOS transparently integrates various video hardware and multimedia standards such as ISDN, MPEG1, MPEG2, H.320 and Windows AVI over a single ATM wire, providing a clean, elegant solution for supporting multiple capabilities.

Supports Bay Networks Multimedia Workgroup Solution

The MOS works with the Bay Networks Multimedia Switch and ATM multimedia adapter cards to deliver the industry's most complete and affordable multimedia workgroup solution. The software provides the guaranteed quality of service capabilities required to support multimedia using existing Windows-based applications.

Features

The MOS, the critical "middleware" of the Bay Networks multimedia workgroup solution, offers unprecedented integration with off-the-shelf Windows applications to support the delivery of multimedia traffic over the existing network infrastructure.

The MOS allows standard Windows-based applications to take advantage of ATM's guaranteed quality of service capabilities without requiring any additional programming or upgrades.

Seamlessly integrated with popular network operating systems such as Novell NetWare and Windows NT, the MOS runs beneath standard Windows 3.1, Windows '95 and Windows for Workgroups software to deliver crisp, sharp multimedia images directly to the desktop. Operations occur transparently, hiding the complexity of ATM from the desktop user.

Multimedia Workgroup Solution

The MOS is one component of the overall Bay Networks multimedia workgroup solution, a complete package that supports the integration of multimedia capabilities within existing network environments. In addition to the MOS, the solution set includes a scalable Multimedia Switch, which supports eight to 20 users with plug-and-play 25 Mbps ATM desktop connections; and the ATM multimedia adapter cards, which provide individual PCs with direct access to the multimedia network.

Figure 1 | Media Operating Software Capabilities

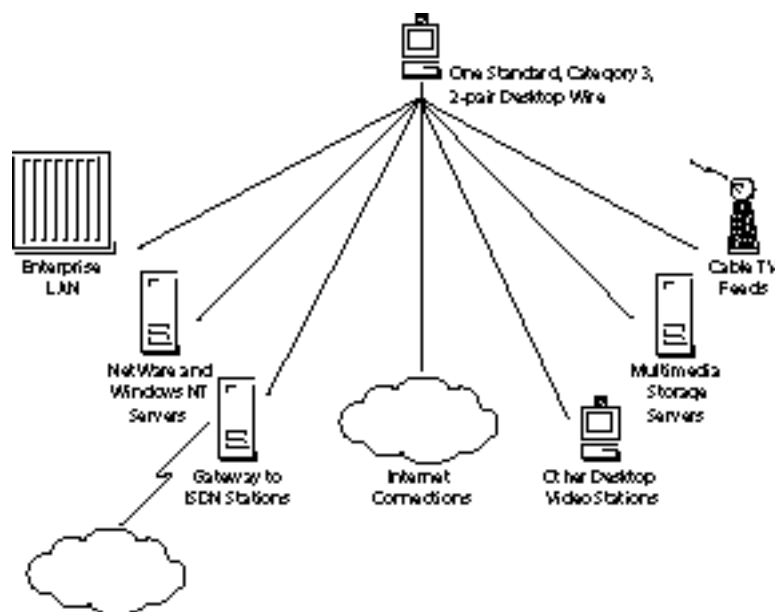
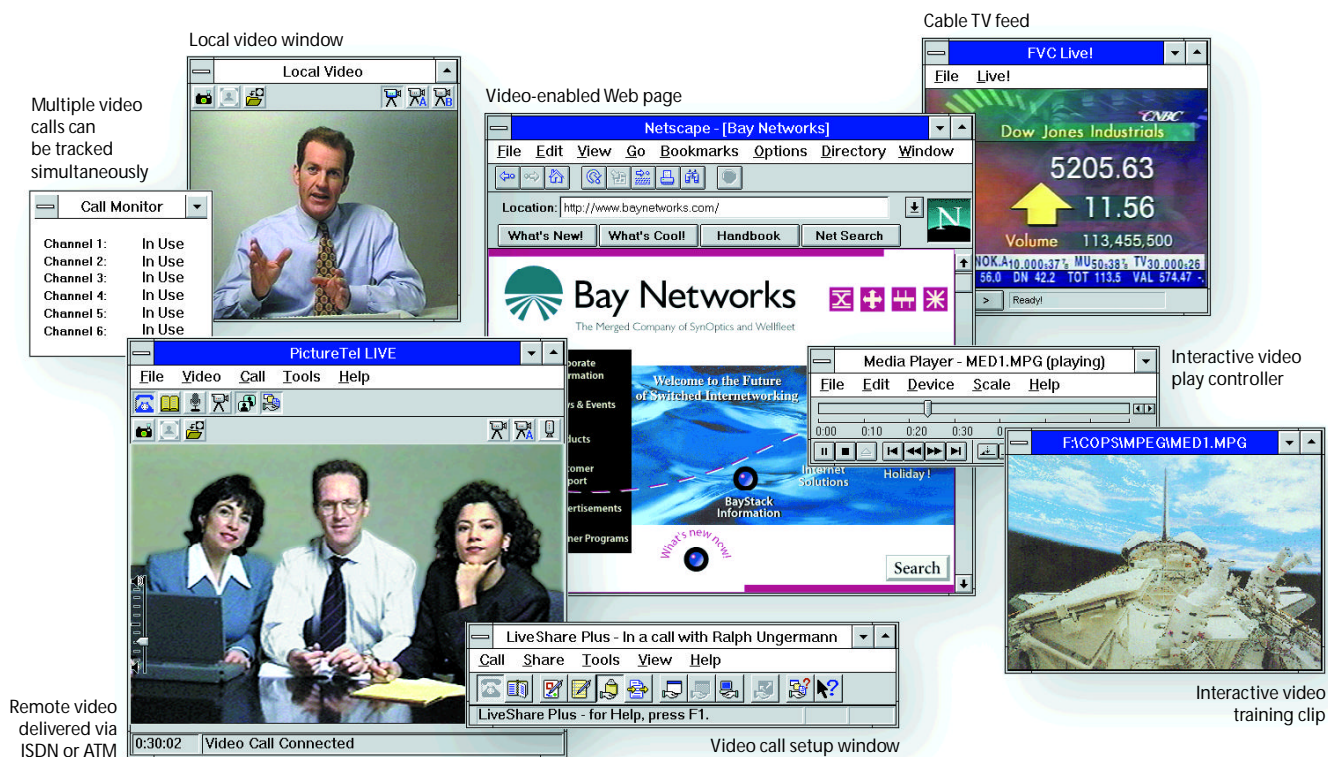


Figure 2 | Multimedia Features Enabled By the MOS



Working together, the three components represent the first multimedia workgroup solution that seamlessly integrates with existing networks and desktop PCs. By operating over the existing structured cabling system and utilizing Windows-based applications, the solution protects investments in existing software, training and the network infrastructure.

Optimized Traffic Flow

The MOS transparently integrates various ISDN, H.320, Windows AVI and MPEG video hardware and multimedia standards over ATM to maintain network manageability. Using sophisticated caching algorithms, the software intelligently allocates the necessary quality of service to ensure that delay-sensitive multimedia and loss-sensitive

data traffic are delivered quickly and efficiently. As a result, data is always right where the application needs it, optimizing the quality of multimedia playback and storage.

Efficient Operation

The MOS runs on the ATM multimedia adapter's on-board RISC processor to accelerate multimedia functions. As a result, the software avoids burdening the PC's central processing unit with additional processing chores, ensuring safe, reliable and efficient operation.

Open Architecture

Any application written to standard Windows Object Linking and Embedding (OLE) APIs can leverage the MOS to automatically gain the advantages of high-performance ATM. Applications that don't require ATM's quality of service can continue to run over popular network operating systems or protocols to access existing file servers, databases or groupware servers.

Client and Server Software

Both client and server versions of the MOS are available. The client MOS operates on the multimedia workgroup clients connected to the switch. The server MOS operates on the multimedia server, which is typically connected to an OC-3 port on an ATM switch in the network center.

Technical Specifications

Technical specifications for the Media Operating Software appear in Table 1.

Table 1 | **Media Operating Software Technical Specifications**

System	486/66 or faster PC
Memory	8 MB RAM min. (16 MB recommended)
Disk Space	1.5 MB free disk space
Operating System	Windows '95, Microsoft Windows 3.1 or Microsoft Windows for Workgroups 3.11
Network Drivers	ODI-2 (Novell NetWare, Microsoft Windows 3.1) or NDIS-3 (Microsoft Windows for Workgroups 3.11)
Network Operating System Support	Novell NetWare Microsoft Windows IBM LAN Server Microsoft LAN Manager

Ordering Information

Ordering information for the Bay Networks multimedia workgroup solution appears in Table 2.

Table 2 | **Multimedia Workgroup Solution Ordering Information**

Order Number	Description
AK3401001	Model 10625 Multimedia Switch
AK3419001	25 Mbps ATM Multimedia Adapter - PCI Bus
AK3419002	25 Mbps ATM Multimedia Adapter - ISA Bus
AK3401002	4 port 25 Mbps MDA for Multimedia Switch
AK3416001	Media Operating Software (single user license)
AK3416002	Media Operating Software (10 user license)
AK3416003	Media Operating Software (30 user license)
AK3416004	Media Operating Software (100 user license)



For more sales and product information, please call **1-800-8-BAYNET**.

United States

Bay Networks, Inc.
4401 Great America Parkway
Santa Clara, CA 95054
Phone: 1-800-8-BAYNET

Bay Networks, Inc.
8 Federal Street
Billerica, MA 01821-5501
Phone: 1-800-8-BAYNET

Europe, Middle East, and Africa

Bay Networks EMEA, S.A.
Les Cyclades – Immeuble Naxos
25 Allée Pierre Ziller
06560 Valbonne, France
Fax: +33-92-966-996
Phone: +33-92-966-966

Intercontinental

Bay Networks, Inc.
8 Federal Street
Billerica, MA 01821-5501
Fax: 508-670-9323
Phone: 1-800-8-BAYNET

World Wide Web: <http://www.baynetworks.com>

Copyright © 1996 Bay Networks, Inc. All rights reserved. Bay Networks and the Bay Networks logo are trademarks and Optivity is a registered trademark of Bay Networks, Inc. Other brand and product names are registered trademarks or trademarks of their respective holders. Information in this document is subject to change without notice. Bay Networks, Inc. assumes no responsibility for any errors that may appear in this document. Printed in USA.